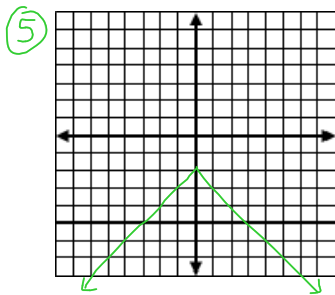
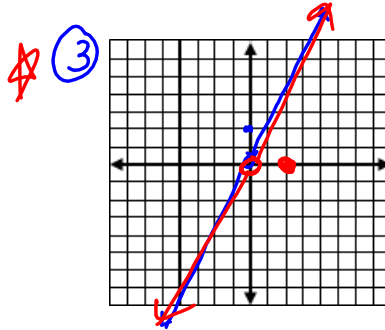
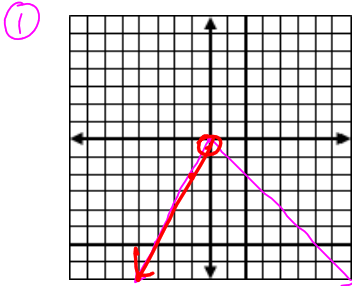


Graphing Piecewise functions ANSWERS



⑦ $f(x) = \begin{cases} x+4 & x < 2 \\ 3x & x \geq 2 \end{cases}$

⑨ $f(x) = \begin{cases} -1 & x < -2 \\ x+1 & -2 \leq x \leq 1 \\ 1 & x > 1 \end{cases}$

2.7 Level A:

1. Vertical translation 2 units up.
3. Reflection across x-axis
5. Horizontal translation translation 5 units to the right
7. Vertical translation 3 units up.
9. Horizontal compression by a factor of 1/6.
11. Vertical compression by a factor of 1/2

13. $g(x) = -x^2$

15. $g(x) = x^4 + 5$

~~17. $g(x) = (x-4)^2$~~

①⑦

$g(x) = x^3 - 3$